



# WORKSAFE

## SUPPORTING SAFE RETURN TO OPERATIONS & SUSTAINABLE BUSINESS PERFORMANCE

### CHALLENGES AMIDST A GLOBAL CRISIS

The **coronavirus disease (COVID-19)** is the most lethal and wide-reaching public health crisis our world has faced in a long time. Direct and indirect **impacts of the global pandemic on business operations** for all industries and sectors have been extensive.

Businesses are facing unprecedented challenges on multiple fronts. While trying to ensure the **sustainability** of their business operations, organisations are looking for ways to **protect** their employees and guarantee their safety and wellbeing – all while **complying** with measures and advice from public health authorities.

As government-imposed prevention measures such as lockdowns evolve around the world, full operations are resuming, and people are **physically returning to the workplace**. Depending on **local regulatory** and logistical circumstances and implications, how can you help your workforce **return to operations safely**? How do you ensure that you are **well-prepared**, with a process that is smooth and fast, while **minimising risks** facing employee health and wellbeing?

### RECOVERY AND SUSTAINABILITY IN THE 'NEW NORMAL'

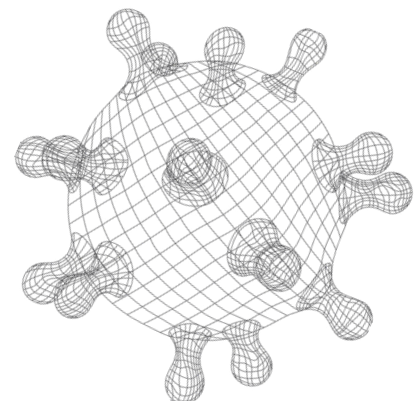
Whether you are preparing for or are amidst the restart of regular activity, we understand that your key priorities are to:

- **Protect your people** – having constructive protocols and procedures to efficiently bring your employees back to the workplace, and to ensure that the resumed working arrangement is safe and conducive for all

- **Protect your business** – having well-planned, effective return to operations so as to swiftly ramp up your activity and prevent against loss of productivity and cost
- **Comply with applicable laws and regulations** – ensuring that the procedures you develop and implement abide by the guidelines and standards outlined by local governing authorities and trade organisations

Once infected by COVID-19 – while some individuals develop clear symptoms, others do not. The latter are thus unaware of their health status, do not report that they are unwell, are not tested for the disease, and are not informed of their immunity status. Moreover, truly non-infected individuals are at a higher risk of being infected in the workplace.

Your return-to-operations phase takes place amidst the 'new normal' for daily activity, where **significant changes in health-related monitoring and behaviour** become the norm. The need to employ health services and measures that can effectively **detect threats, mitigate risks** and **provide treatment**, therefore, is increasingly vital.





# WORKSAFE

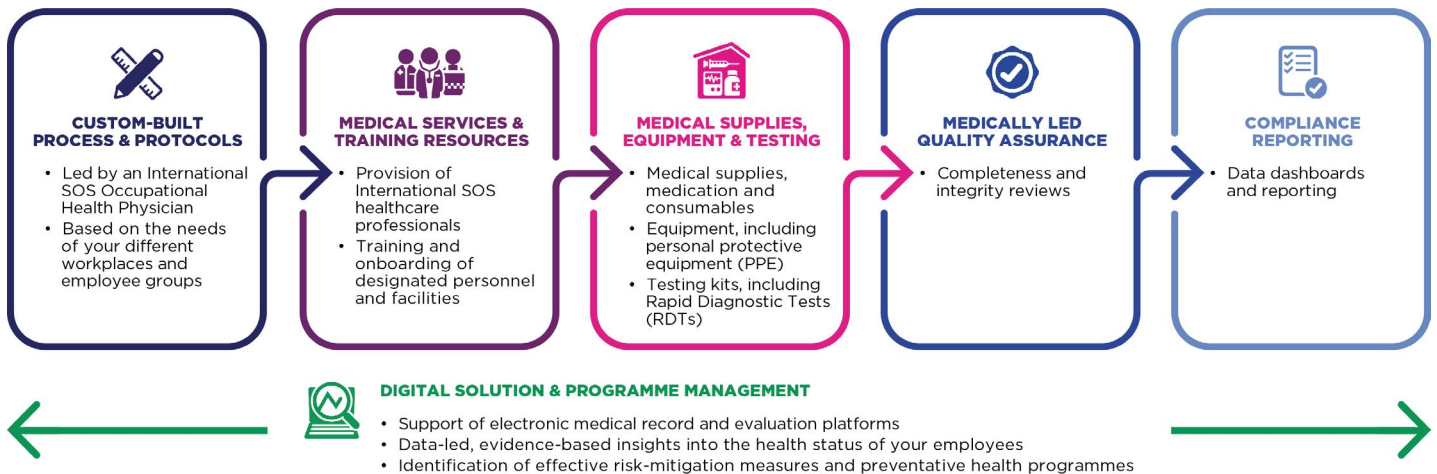
**SUPPORTING SAFE RETURN TO OPERATIONS & SUSTAINABLE BUSINESS PERFORMANCE**

## OUR RETURN-TO-OPERATIONS SOLUTION

Named **WorkSafe**, the solution we have designed assists in the development of sustainable protocols – to aid in safe return to operations and resuming of business activities, and to support long-term organisational continuity.





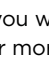
Either as an integrated solution, or through a selection of the elements most fit for your purpose, WorkSafe provides you with **end-to-end medical support**, ensuring that you receive an International SOS-standard quality of **health monitoring and medical care for your employees**.

## INTERNATIONAL SOS WORKSAFE SOLUTION



## BENEFITS OF WORKSAFE

With our solution, you gain support with:

-  **Safeguarding the health and wellbeing of your people** – through implementation of an effective return-to-operations programme, help your employees to reduce their feelings of uncertainty and levels of physical and mental stress
-  **Fortifying your business** – mitigate the risk of further COVID-19 contamination, prevent disruption to the process of restarting your operations, and secure continuity
-  **Boosting cost-efficiency** – reduce resources needed for full return to the workplace, with the support of appropriate testing measures and the decrease in potential isolation time and associated costs
-  **Adhering to regulations** – compliance with government and industry directives enables you to fulfill your obligations and duties to operate sustainably and provide for employee wellbeing
-  **Protecting the community** – creation of a safe and healthy work environment also helps to diminish the risk of cross-contamination within the wider community

If you would like to have a discussion about our WorkSafe solution, kindly reach out to your local International SOS sales representative. For more information on the COVID-19 resources and solutions we offer, you can visit <https://www.internationalsos.com/coronavirus>.





# WORKSAFE

## SUPPORTING SAFE RETURN TO OPERATIONS & SUSTAINABLE BUSINESS PERFORMANCE

### CHALLENGES AMIDST A GLOBAL CRISIS

The **coronavirus disease (COVID-19)** is the most lethal and wide-reaching public health crisis our world has faced in a long time. Direct and indirect **impacts of the global pandemic on business operations** for all industries and sectors have been extensive.

Businesses are facing unprecedented challenges on multiple fronts. While trying to ensure the **sustainability** of their business operations, organisations are looking for ways to **protect** their employees and guarantee their safety and wellbeing – all while **complying** with measures and advice from public health authorities.

As government-imposed prevention measures such as lockdowns evolve around the world, full operations are resuming, and people are **physically returning to the workplace**. Depending on **local regulatory** and logistical circumstances and implications, how can you help your workforce **return to operations safely**? How do you ensure that you are **well-prepared**, with a process that is smooth and fast, while **minimising risks** facing employee health and wellbeing?

### RECOVERY AND SUSTAINABILITY IN THE 'NEW NORMAL'

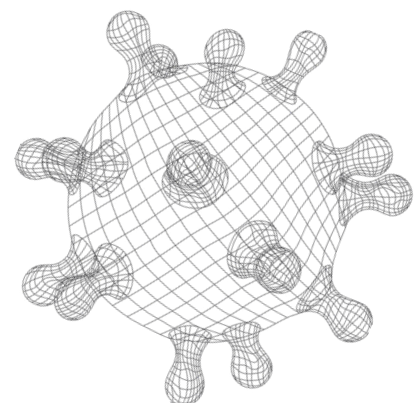
Whether you are preparing for or are amidst the restart of regular activity, we understand that your key priorities are to:

- **Protect your people** – having constructive protocols and procedures to efficiently bring your employees back to the workplace, and to ensure that the resumed working arrangement is safe and conducive for all

- **Protect your business** – having well-planned, effective return to operations so as to swiftly ramp up your activity and prevent against loss of productivity and cost
- **Comply with applicable laws and regulations** – ensuring that the procedures you develop and implement abide by the guidelines and standards outlined by local governing authorities and trade organisations

Once infected by COVID-19 – while some individuals develop clear symptoms, others do not. The latter are thus unaware of their health status, do not report that they are unwell, are not tested for the disease, and are not informed of their immunity status. Moreover, truly non-infected individuals are at a higher risk of being infected in the workplace.

Your return-to-operations phase takes place amidst the 'new normal' for daily activity, where **significant changes in health-related monitoring and behaviour** become the norm. The need to employ health services and measures that can effectively **detect threats, mitigate risks** and **provide treatment**, therefore, is increasingly vital.





# WORKSAFE

**SUPPORTING SAFE RETURN TO OPERATIONS  
& SUSTAINABLE BUSINESS PERFORMANCE**

## CHALLENGES AMIDST A GLOBAL CRISIS

The **coronavirus disease (COVID-19)** is the most lethal and wide-reaching public health crisis our world has faced in a long time. Direct and indirect **impacts of the global pandemic on business operations** for all industries and sectors have been extensive.

Businesses are facing unprecedented challenges on multiple fronts. While trying to ensure the **sustainability** of their business operations, organisations are looking for ways to **protect** their employees and guarantee their safety and wellbeing – all while **complying** with measures and advice from public health authorities.

As government-imposed prevention measures such as lockdowns evolve around the world, full operations are resuming, and people are **physically returning to the workplace**. Depending on **local regulatory** and logistical circumstances and implications, how can you help your workforce **return to operations safely**? How do you ensure that you are **well-prepared**, with a process that is smooth and fast, while **minimising risks** facing employee health and wellbeing?

## RECOVERY AND SUSTAINABILITY IN THE 'NEW NORMAL'

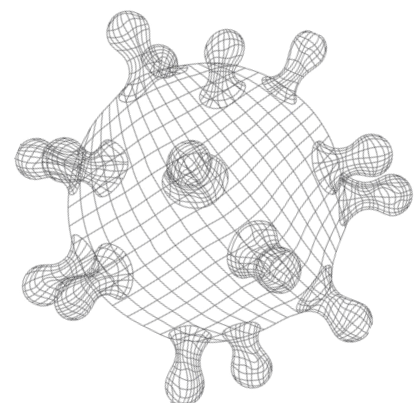
Whether you are preparing for or are amidst the restart of regular activity, we understand that your key priorities are to:

- **Protect your people** – having constructive protocols and procedures to efficiently bring your employees back to the workplace, and to ensure that the resumed working arrangement is safe and conducive for all

- **Protect your business** – having well-planned, effective return to operations so as to swiftly ramp up your activity and prevent against loss of productivity and cost
- **Comply with applicable laws and regulations** – ensuring that the procedures you develop and implement abide by the guidelines and standards outlined by local governing authorities and trade organisations

Once infected by COVID-19 – while some individuals develop clear symptoms, others do not. The latter are thus unaware of their health status, do not report that they are unwell, are not tested for the disease, and are not informed of their immunity status. Moreover, truly non-infected individuals are at a higher risk of being infected in the workplace.

Your return-to-operations phase takes place amidst the 'new normal' for daily activity, where **significant changes in health-related monitoring and behaviour** become the norm. The need to employ health services and measures that can effectively **detect threats, mitigate risks** and **provide treatment**, therefore, is increasingly vital.





# WORKSAFE

## SUPPORTING SAFE RETURN TO OPERATIONS & SUSTAINABLE BUSINESS PERFORMANCE

### CHALLENGES AMIDST A GLOBAL CRISIS

The **coronavirus disease (COVID-19)** is the most lethal and wide-reaching public health crisis our world has faced in a long time. Direct and indirect **impacts of the global pandemic on business operations** for all industries and sectors have been extensive.

Businesses are facing unprecedented challenges on multiple fronts. While trying to ensure the **sustainability** of their business operations, organisations are looking for ways to **protect** their employees and guarantee their safety and wellbeing – all while **complying** with measures and advice from public health authorities.

As government-imposed prevention measures such as lockdowns evolve around the world, full operations are resuming, and people are **physically returning to the workplace**. Depending on **local regulatory** and logistical circumstances and implications, how can you help your workforce **return to operations safely**? How do you ensure that you are **well-prepared**, with a process that is smooth and fast, while **minimising risks** facing employee health and wellbeing?

### RECOVERY AND SUSTAINABILITY IN THE 'NEW NORMAL'

Whether you are preparing for or are amidst the restart of regular activity, we understand that your key priorities are to:

- **Protect your people** – having constructive protocols and procedures to efficiently bring your employees back to the workplace, and to ensure that the resumed working arrangement is safe and conducive for all

- **Protect your business** – having well-planned, effective return to operations so as to swiftly ramp up your activity and prevent against loss of productivity and cost
- **Comply with applicable laws and regulations** – ensuring that the procedures you develop and implement abide by the guidelines and standards outlined by local governing authorities and trade organisations

Once infected by COVID-19 – while some individuals develop clear symptoms, others do not. The latter are thus unaware of their health status, do not report that they are unwell, are not tested for the disease, and are not informed of their immunity status. Moreover, truly non-infected individuals are at a higher risk of being infected in the workplace.

Your return-to-operations phase takes place amidst the 'new normal' for daily activity, where **significant changes in health-related monitoring and behaviour** become the norm. The need to employ health services and measures that can effectively **detect threats, mitigate risks** and **provide treatment**, therefore, is increasingly vital.

